

VitalDose[®] EVA

Sustained drug delivery for **oncology** therapies

Despite the rapid evolution of cancer treatment, oncology therapies continue to face challenges in achieving sustained, efficacious drug exposure while minimizing systemic toxicity and dosing burden.

The **VitalDose[®] EVA platform** is a proven, polymer-based drug delivery platform engineered to meet these challenges. The platform's formulation flexibility enables applications from systemic long-acting delivery to localized depots ideal for a wide range of oncology therapeutics across various treatment settings.



Long-Acting Continuous Release

Delivers drug for months to years, with constant, uninterrupted drug release



Reduced Adverse Effects

Enables localized or controlled systemic exposure to improve drug safety profiles



Optimized Tumor Targeting

Sustained and localized release enhances drug concentration at the tumor site

Immunotherapy

| Chemotherapy

| Hormone Therapy

| Targeted Therapy

VitalDose® EVA for Drug Delivery

VitalDose® EVA delivery technology supports innovative oncology development to overcome key barriers in cancer treatment.

Prolonged & Targeted Exposure

Sustained drug release maintains consistent plasma or local tissue levels to enhance efficacy and reduce dosing frequency

Reduced Systemic Toxicity

Enable localized or controlled systemic exposure to minimize off-target effects and improve drug safety profiles

Enhanced Patient Experience

Fewer administrations mean reduced treatment burden and improved adherence

Broad Molecule Compatibility

Compatible with a range of drug classes: small molecules, peptides, biologics and ASOs

Flexible Formulation Design

Tunable polymer properties along with implant design flexibility allow precise control of release kinetics and dose loading

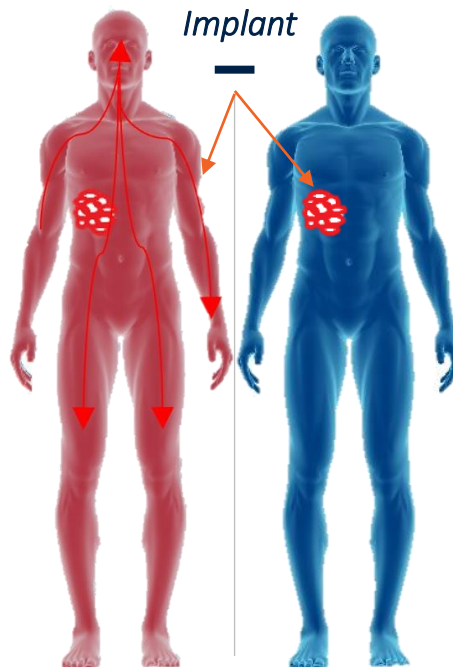
Oncology Drug Delivery with Sustained Precision

Systemic Delivery (Subcutaneous)

- **Sustained Therapeutic Exposure**
Maintain stable drug concentrations to support continuous target engagement
- **Improved Treatment Adherence**
Reduce dosing frequency for patient convenience & consistent therapy delivery
- **Enhanced Pharmacological Control**
Minimize peaks & troughs to reduce toxicity & improve tolerability

Localized Delivery (Intratatumoral or Tumor Adjacent)

- **Concentrated tumor exposure**
Achieve high local drug levels to maximize on-target efficacy
- **Reduce Systemic Burden**
Limit off-target exposure to minimize adverse effects
- **Platform Versatility**
Enable co-delivery of multiple drugs to explore synergistic treatment approaches within the TME

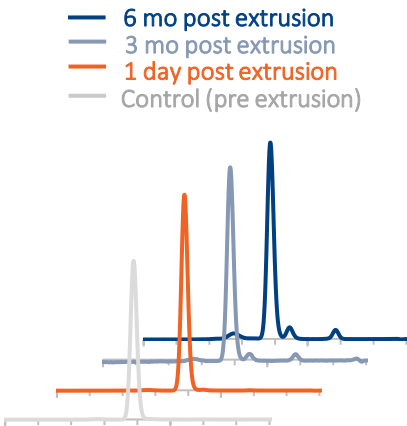


Utilize the VitalDose® Platform for Either Systemic or Localized Drug Delivery to Optimize Therapeutic Impact

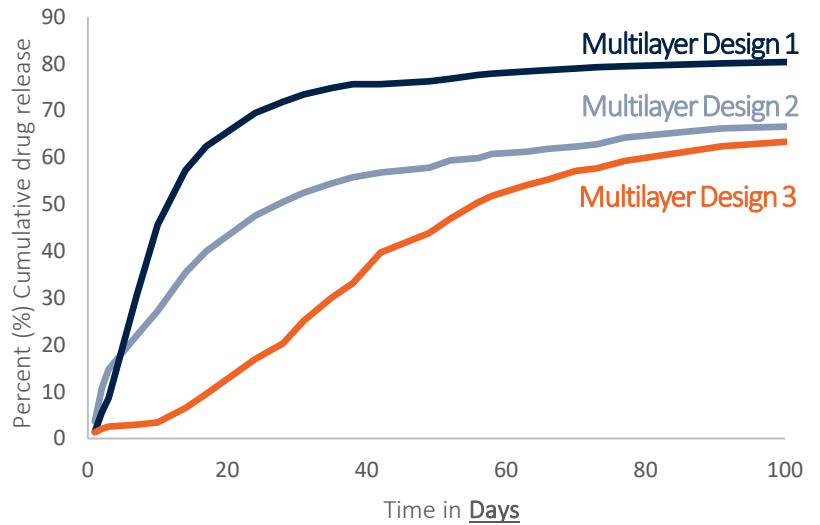
Biologic and Peptide drug release can be tailored through various means including multilayer formulation design. The below graphs demonstrates variation of drug release through various membrane designs.

Tunable Implant Design for Antibody Drug Release

Trastuzumab Stability (SEC)

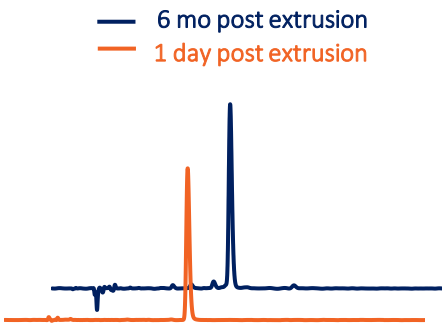


Trastuzumab Release from 70% loaded implant core

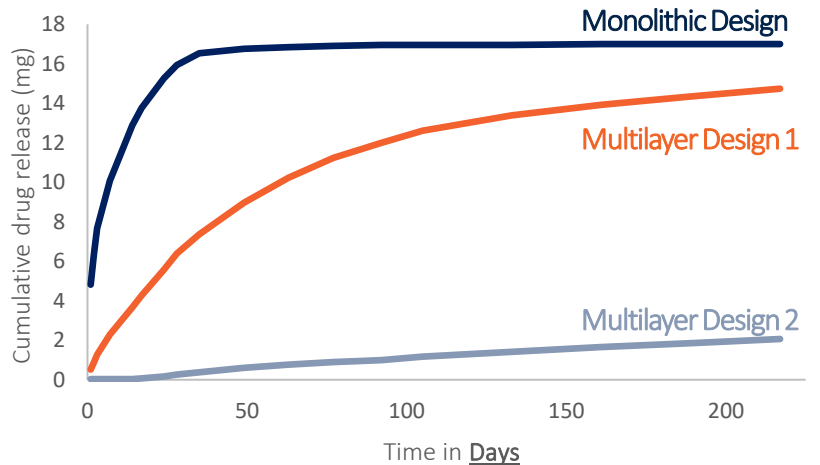


Tunable Implant Design for Peptide Drug Release

Goserelin Acetate Stability (HPLC)

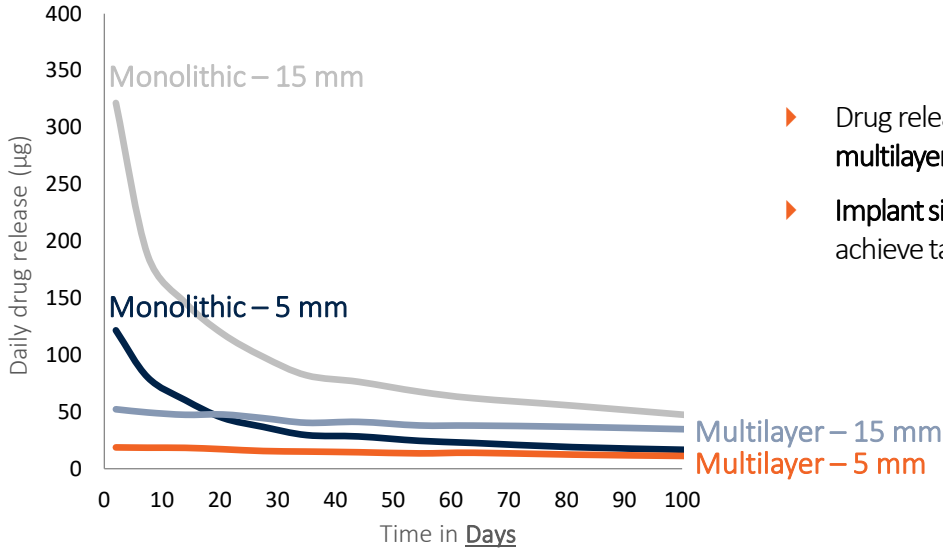


Goserelin Acetate Release from 60% loaded implant core



Tunable Implant Design for Small Molecule Drug Release

Letrozole Release from 30% loaded implant core



- ▶ Drug release can be tuned through **multilayer design** of the implant
- ▶ **Implant size** (length) can be modified to achieve target dosing

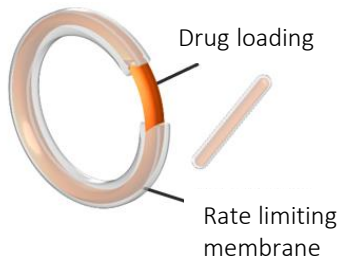
Drug Delivery for Combination Therapy

VitalDose® EVA has the capability to co-load structurally distinct drug molecules to support combination therapy from a single platform. Different drugs embedded in the same EVA matrix can maintain independent, concentration-proportional release profiles allowing precise tailoring of multi-drug regimens.

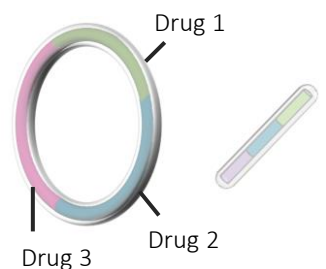
Monolithic Design



Multilayer Design Controlled release membrane



Multi-Drug Design Combination therapy



Small Molecules

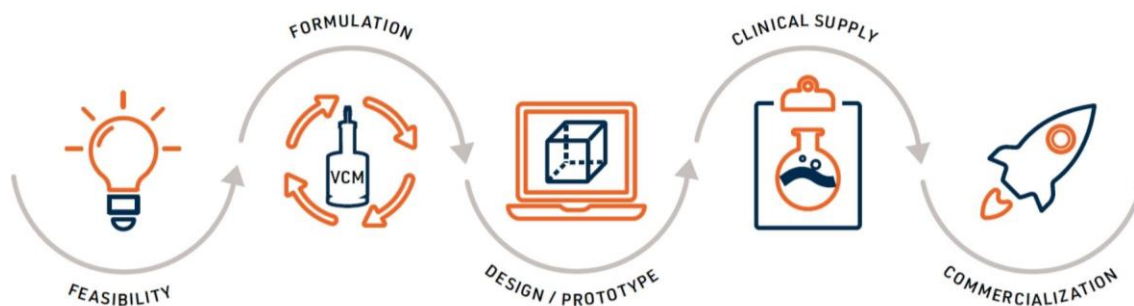
Peptides

mAbs

ASOs

Preclinical Development Support

The **Celanese Development & Feasibility Lab** can provide development services for customized formulations through technical feasibility.



Contact us today to see how VitalDose® EVA can deliver a clear solution for your molecule in oncology applications.

This publication was printed based on Celanese's present state of knowledge, and Celanese undertakes no obligation to update it. Because conditions of product use are outside Celanese's control, Celanese makes no warranties, express or implied, and assumes no liability in connection with any use of this information. Nothing herein is intended as a license to operate under or a recommendation to infringe any patents.

Celanese®, registered C-ball design and all other trademarks identified herein with ®, TM, SM, unless otherwise noted, are trademarks of Celanese or its affiliates.

Copyright © 2026 Celanese or its affiliates. All rights reserved. Brochure Publication: EVA – VitalDose® VitalDose Oncology Data Spotlight – Solution Showcase (01052026)



Contact Information

Website: www.vitaldose.com | **Email:** healthcare@celanese.com | **Customer Service:** t: +1-800-526-4960 t: +1-859-372-3214

Americas

8040 Dixie Highway, Florence, KY 41042 USA
Product Information Service
t: +1-800-833-4882 t: +1-859-372-3244

Europe

Am Unisys-Park 1, 65843 Sulzbach, Germany
Product Information Service
t: +[00]-800-86427-531 t: +49-[0]-69-45009-1011

Asia

4560 Jinke Road, Zhang Jiang HiTech Park
Shanghai 201203 PRC
Customer Service
t: +86-21-3861-9266 t: +86-21-3861-9599