



ELOTEX® Redispersible Polymer Powders
ELOTEX® Specialty Powder Additives
Celvolit® Emulsion Polymers for
Building & Construction Solutions

PRODUCT PORTFOLIO NORTH AMERICA

About us – From product supplier to solutions provider

The company

We are a global technology and specialty materials company based in Dallas, Texas, operating in key geographic locations worldwide. We are continuously working on innovation and process improvement and are always looking for exciting new opportunities. In all the industries we serve, our products hold leading positions worldwide. We offer an advanced product portfolio complemented by large global production capacity, operating efficiencies, proprietary production technology and competitive cost structures.

Our two core business areas

- Acetyl Chain: acetic acid, vinyl acetate monomer, other acetyl derivatives, EVA polymers, emulsion polymers, redispersible polymer powders, specialty powder additives and cellulose derivatives
- Engineered Materials: specialty thermoplastic and food ingredients

Advanced technology for a sustainable future

At Celanese, we are uniquely positioned to improve the world through the power of chemistry. As we embrace this opportunity, we demonstrate our deep sense of responsibility to keep people safe and help protect our planet. Combining innovation with chemistry, we are proud to make products for a safer, cleaner and less wasteful world. Our sustainability strategy is based on three pillars: advancing safe and sustainable customer solutions, investing in our people and communities and helping to preserve the environment.

Celanese polymer powder business

The Celanese product portfolio comprises ELOTEX® redispersible polymer powders and ELOTEX® specialty powder additives. Whether used as standalone additives or in combination with one another, our products offer a powerful toolkit for polymer modified building and construction materials such as modern dry-mix mortars. Typical applications are flooring compounds, tile adhesives, tile grouts, external thermal insulation composite systems (EIFS), renders, plasters, waterproofing membranes, joint fillers and repair mortars.

ELOTEX® redispersible polymer powders are homo- and co-polymers based on vinyl acetate, ethylene, vinyl versatate and other monomers. Our products act as organic binders and are mostly used in combination with cement, gypsum and hydrated lime. ELOTEX® free-flowing polymer powders are produced by spray-drying of aqueous polymer dispersions, allowing us to supply a wide range of additives with different features. Our products are essential ingredients to enhance critical properties of modern dry-mix mortars such as adhesion, cohesion, flexibility and workability. Moreover, ELOTEX® redispersible polymer powders allow manufacturers to formulate finished products with low volatile organic compound (VOC) emissions in accordance with demanding governmental regulations as well as requirements of internationally recognized environmental certifications and labels, such as LEED, *EMICODE® and Blue Angel.

ELOTEX® specialty powder additives comprise a number of technologies ranging from silane encapsulation to engineered formulated additives. Our customers can experience unique improvements, such as improved water and stain resistance, superior water repellency, reduced efflorescence, enhanced workability, extended open time and optimized levelling properties by the use of these additives.

Celanese emulsion polymers business

Celanese manufactures one of the broadest portfolios of dispersions in the world, based on vinyl acetate, ethylene, vinyl versatate, vinyl chloride, styrene and acrylic monomers. We utilize globally both high-pressure (VAE) and conventional (atmospheric pressure) emulsion polymerization processes. Celanese polymer dispersions offer progressive solutions for different construction applications, such as ready-to-use tile adhesives, one- and two-component waterproofing membranes, joint fillers, primers and renders. Thanks to our innovative chemistry, our products provide adhesion, cohesion, flexibility and water resistance to building and construction materials.



4	ELOTEX® powders & Celvolit® emulsion polymers - Essential additives for construction applications
6	Flooring compounds, primers & adhesives
8	Tile adhesives
10	Tile grouts
12	Waterproofing
14	Concrete repair
16	Exterior insulation & finish systems (EIFS)
18	Cement & lime-based renders
20	Joint fillers & plasters
22	Dust control & soil stabilization
24	Product overview
26	Global reach





ELOTEX® powders & Celvolit® emulsion polymers are essential additives for construction applications



1 Flooring



4 Tile adhesives



7 Concrete repair



10 Joint fillers & plasters



2 Primers



5 Tile grouts



8 Exterior insulation & finish systems (EIFS)



3 Carpet adhesives



6 Waterproofing



9 Renders



Flooring compounds, primers & adhesives

ELOTEX® redispersible polymer powders, ELOTEX® specialty powder additives and Celvolit® emulsion polymers enhance the performance of mineral binder-based flooring compounds such as self-leveling underlayments, providing smooth, nearly defect-free and mechanically strong foundations for successful flooring installations.

A smooth and flat floor surface is essential for easy installation and to maximize durability of floor finishes. Celanese polymer binders provide solutions for formulating flooring products which are capable of adhering to many types of surfaces and harden quickly without cracking, even when applied at very low layer thicknesses. With our wide range of defoamed ELOTEX® redispersible polymer powders (RDP), it is possible to formulate premium quality self-leveling floor compounds with improved flow, adhesion, cohesion, abrasion resistance and excellent aesthetic appearance.

ELOTEX® FLOWKIT53 helps formulators to easily develop self-leveling compounds and floor screeds with a single multi-functional additive, reducing the number of ingredients needed in the formulations and overall complexity. Our products improve flow without bleeding or segregation and show excellent defoaming and leveling properties.

Celvolit® emulsion polymers can be formulated into bonding primers to seal concrete surfaces, increase wettability and provide a surface receptive to good bonding to self-leveling compounds. Additionally, our vinyl-based emulsions can be formulated into construction adhesives for wood surfaces.



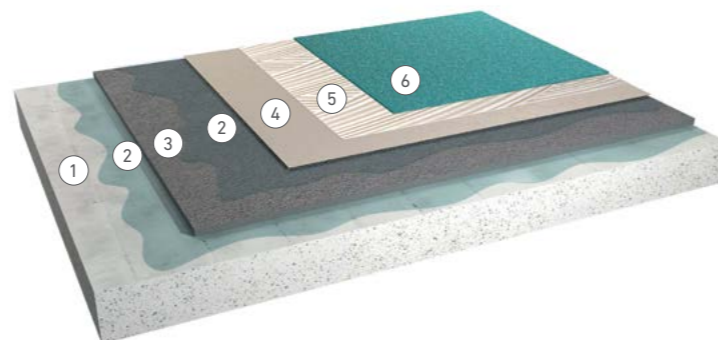
ELOTEX® redispersible polymer powders ensure excellent performance of flooring compounds

Benefits

- Increased flowability, workability, and leveling, while lowering water demand
- Improved defoaming properties and surface appearance
- Higher abrasion and crack resistance
- Increased density and tensile bond strength on various substrates
- Enhanced flexural strength
- Low VOC values – *EMICODE® EC1^{PLUS} suitability

Typical applications

- Cement and gypsum-based self-leveling compounds and screeds
- Decorative overlays such as micro toppings and stamped overlays
- Residential and industrial flooring
- Pumpable and trowelable applications
- Adhesives, bonding and sealing primers with Celvolit® emulsion polymers



1 concrete substrate, 2 primer, 3 floor screed, 4 self-leveling compound, 5 carpet adhesive, 6 carpet

●●● = excellent ●● = very good ● = good
 ●●●● = highly recommended ●●● = recommended ●● = suitable

Redispersible polymer powders

Products		ELOTEX® FL2280	ELOTEX® FL3210	ELOTEX® FL1900
Characteristics	Chemical base	VA/E	VA/VV/E	VA/VV
	MFFT (°C), approx.	3	5	3
	Type	Hard	Hard	Hard
	Stabilization	PVOH	PVOH	PVOH
	Eco-friendly *EMICODE®	EC1 ^{PLUS}	EC1 ^{PLUS}	EC1 ^{PLUS}
Performance	Defoaming	●●	●●●	●●●
	Self-healing	●●	●●	●●●
	Flow enhancement	●●●	●●●	●●●
	Abrasion resistance	●●●	●●●	●●●
	Surface appearance	●●	●●●	●●●
Applications	Cement-based SLU	●●●	●●●	●●●
	Gypsum-based SLU	●	●●●	●●●
	Screeds (cement/gypsum)	●●●	●●	●●
Benefits		Good defoaming, leveling, and adhesion properties for smooth, even surfaces.	Excellent defoaming, leveling, and adhesion properties with improved surface appearance.	Excellent defoaming, self-healing, and leveling properties with outstanding surface appearance, great adhesion, and high peel strength between water-based adhesives and SLU.

Specialty powder additives

Products		ELOTEX® FLOWKIT53	ELOTEX® CAST710
Characteristics	Chemical base	VA/E	Formulated additive
	Functionality	Rheology and adhesion	Rheology
	Eco-friendly *EMICODE®	EC1 ^{PLUS}	EC1 ^{PLUS}
Performance	Stabilization	–	●●
	Flowability	●●●	●●
	Adhesion and cohesion	●●●	●●
	Defoaming	●●●	●●●
Applications	Cement-based SLU	●●●	–
	Gypsum-based SLU	●●●	●●●
	Screeds (cement/gypsum)	●●●	●●●
Benefits		Multifunctional additive combining features of superplasticizers, defoamers, stabilizers and part of RDP. Excellent defoaming, excellent flow without bleeding or segregation, very good adhesion coupled with reduced water demand, high strength development, and decreased shrinkage.	Multifunctional additive designed to enable use of β-hemihydrate calcium sulfate. It provides excellent flow, stabilization and defoaming properties coupled with enhanced workability, adhesion, and reduced water demand.

Emulsion polymers

Products		Celvolit® 3220	Celvolit® 4215	Celvolit® 3025
Characteristics	Chemical base	VA/E	VA/E	PVAc
	MFFT (°C), approx.	0	3	16
	Tg (°C), approx.	0	18	40
	Solids content (%)	54.0–57.0	54.0–57.0	54.5–57.5
	pH value	3.8–5.2	3.8–5.2	4.3–5.7
	Brookfield viscosity (25 °C) (mPa·s)	1600–2900	1600–2900	1700–2900
	Stabilization	PVOH/Surfactant	PVOH/Surfactant	PVOH/Surfactant
	Performance	Primers for concrete - sealing and bonding	●●●	●●●
Wood/plywood adhesives		●●	●●●	●●●
Flooring adhesives (general)		●●●	●●●	●●
Benefits		General purpose primer for masonry surfaces. Good compatibility with cement based mortar. Can be used as concrete bonding agent for concrete repair. Suitable for flexible adhesives or difficult-to-adhere substrates.	Good adhesion properties to a variety of substrates including wood and concrete. Good for concrete sealer and bonding primer.	Very good adhesion and bond strength to wood based substrates. Rigidity can be modified with external plasticizers. Can be used as concrete primer if plasticized.



Tile adhesives

ELOTEX® redispersible polymer powders and specialty powder additives enhance the performance characteristics of cementitious tile adhesives by improving adhesion, cohesion and flexibility. Thanks to their enhanced workability, wet strength and broad adhesion even on difficult-to-adhere substrates, formulators can easily develop new finishes that meet the requirements of the latest architectural and design trends.

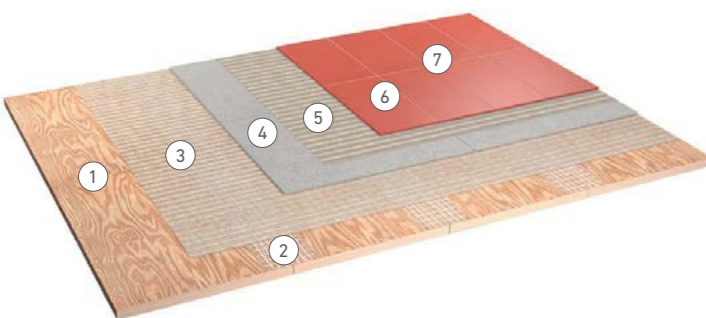
Choosing the right polymer binder for adhesives is essential for ensuring a high-quality tiling application and meeting the most challenging specification requirements according to ANSI A118.4, A118.11 and A118.15.

ELOTEX® redispersible polymer powders (RDP) are well suited for formulating one-component systems with many desirable features and excellent durability, enabling the installation of a wide variety of tiles. ELOTEX® RDP modified tile adhesives offer many advantages, such as:

- Creamy consistency
- Easy, effective and reliable application even when applied by thin-bed methods
- Significant improvement of adhesive strength between tiles and substrates including plywood, even after exposure to various conditions including freeze/thaw cycles
- High mortar flexibility, which is essential for withstanding high mechanical stresses and loads

ELOTEX® OTA powder additives are specially designed to extend the open time (EN 12004) and preserve wetting and fresh mortar properties of tile adhesives.

To this end, we offer a comprehensive range of products designed to provide formulators various solutions to develop tile adhesives with optimal performance.



1 plywood substrate, 2 mesh (over plywood joints), 3 adhesive, 4 backerboard, 5 tile adhesive, 6 tile grout, 7 ceramic tiles

Redispersible polymer powders

●●● = excellent ●● = very good ● = good
●●●● = highly recommended ●●● = recommended ●● = suitable

Products		ELOTEX® MP2701	ELOTEX® ST2750	ELOTEX® FX2311	ELOTEX® FX5600
Characteristics	Chemical base	VA/E	VA/E	VA/E	VA/E/VV/A
	MFFT (°C), approx.	3	3	3	0
	Type	Hard	Hard	Hard	Semi-flexible
	Stabilization	PVOH	PVOH	PVOH	PVOH
	Rheology	Neutral	Thixotropic	Neutral	Neutral
	Eco-friendly *EMICODE®	EC1 ^{PLUS}	EC1 ^{PLUS}	EC1 ^{PLUS}	EC1
Performance	Open time	●●	●●	●●●	●●●
	Adhesion after heat ageing	●●●	●●●	●●●	●●
	Adhesion after water immersion	●	●●	●●●	●●●
	Flexibility	●●	●●	●●	●●
Applications	ANSI A118.4	●●	●●●	●●●	●●●
	ANSI A118.11	●●	●●●	●●●	●●●
	ANSI A118.15	●●	●●	●●	●●●
Benefits		Good workability and shear adhesive strength. Suitable for other applications.	Quality RDP for standard tile adhesives which require sag resistance. Excellent for use with large format tiles.	Quality RDP with multipurpose properties for standard tile adhesives. Excellent shear strength and adhesion to plywood in thin set applications.	High quality RDP recommended for large tile and outdoor applications where high flexibility or deformability are needed with higher RDP dosages.

Specialty powder additives

Products		ELOTEX® OTA100	ELOTEX® OTA200
Characteristics	Chemical base	Formulated compound	Formulated compound
	Functionality	Open time extension	Open time extension
	Dosage range (weight % on dry mortar)	0.2-0.5	0.2-0.5
Performance	Impact on rheology (at recommended dosage)	Neutral	Minor
	Impact on early strength adhesion (at recommended dosage)	Neutral	Neutral
	Open time	●●●	●●●
	Substrate wettability	●●●	●●●
Main application	Portland cement-based tile adhesives	●●●	●●
	Fast-setting cement-based tile adhesives	●●	●●●
Further applications	Renders	●●●	●●●
	Cement-based SLU	●	●●●
Benefits		Extended open time, increased substrate wettability, delayed skin formation, longer correction time.	Extended open time, increased substrate wettability, delayed skin formation, longer correction time.



Tile grouts

Tile grouts formulated with ELOTEX® redispersible polymer powders ensure professional finish for any tiling work by significantly increasing adhesion, flexibility and durability of tiled substrates. Additionally, our ELOTEX® specialty powder additives provide many performance benefits, such as improving the appearance of grouts, providing outstanding water resistance as well as reducing efflorescence.

ELOTEX® redispersible polymer powders provide superior protection for grouted joints between tiles by reducing stress-induced cracking as well as protect the surface against abrasion. By using our special range of hydrophobic ELOTEX® products, it is possible to reduce water absorption, prevent discoloration and efflorescence for extended periods of time.

We offer a variety of products, which enables formulators to create innovative grouting solutions that can meet or even exceed the most demanding industry requirements and standards.



without ELOTEX® ERA100



with ELOTEX® ERA100

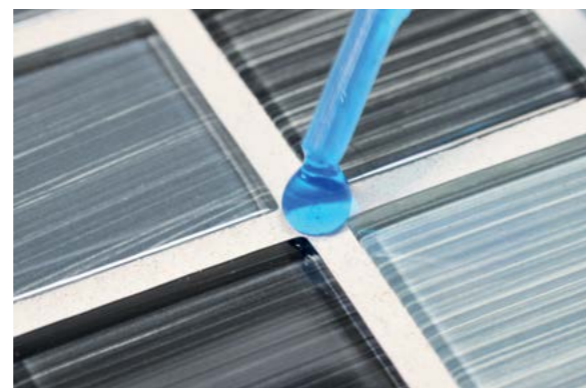
ELOTEX® ERA100 for efficient efflorescence control

Benefits

- Improved adhesion to tile edges
- Increased flexibility and reduced shrinkage
- Increased cohesive strength
- Improved abrasion resistance
- Higher hydrophobicity and water repellency when using hydrophobic ELOTEX® powder products, particularly ELOTEX® SEAL200
- Great color stability and reduced efflorescence with ELOTEX® ERA product line
- Low VOC values - *EMICODE® EC1^{PLUS} suitability

Typical applications

- Interior and exterior tile grouting for flooring and wall
- All format of tiles
- Porous, vitreous ceramic and natural stone tiles
- Standard and fast-setting tile adhesives, including ANSI A118.7
- Mineral and non-mineral substrates



ELOTEX® SEAL200 for outstanding hydrophobicity of tile grouts

●●● = excellent ●● = very good ● = good
 ●●● = highly recommended ●● = recommended ● = suitable

Redispersible polymer powders

Products		ELOTEX® MP2701	ELOTEX® HD1500	ELOTEX® HD2040
Characteristics	Chemical base	VA/E	VA/VV	VA/E
	MFFT (°C), approx.	3	0	0
	Type	Hard	Semi-flexible	Flexible
	Protective colloid	PVOH	PVOH	PVOH
Performance	Eco-friendly *EMICODE®	EC1 ^{PLUS}	EC1	EC1 ^{PLUS}
	Adhesion	●●●	●●●	●●●
	Hydrophobicity	-	●	●●●
Benefits	Defoaming	-	●●●	●
		Excellent workability, good adhesion and abrasion resistance. Typically recommended in combination with ELOTEX® SEAL additives for improved water resistance. Suitable for other applications.	Good defoaming, reduced water absorption, superior adhesion, and good abrasion resistance.	Excellent, long lasting water repellency and reduced water absorption combined with good adhesion and abrasion resistance.

Specialty powder additives

Products		ELOTEX® SEAL81	ELOTEX® SEAL200	ELOTEX® ERA100	ELOTEX® ERA200
Characteristics	Chemical base	Silane	Silane	Modified natural rosin	Modified natural rosin
	Functionality	Hydrophobicity	Hydrophobicity	Anti-efflorescence	Anti-efflorescence
Performance	Hydrophobicity	●●	●●●	-	●
	Oleophobicity	-	●	-	-
	Stain resistance	-	●	-	-
	Anti-efflorescence	●	●●	●●●	●●●
Benefits		Excellent water repellency and water beading effect, long term durability combined with very good wetting and mixing properties.	Superior water repellency and superior water beading effect, long term durability combined with very good wetting and mixing properties.	Efficient against primary efflorescence, very good wetting and mixing properties.	Efficient against primary and secondary efflorescence, reduced water permeability, very good wetting and mixing properties.



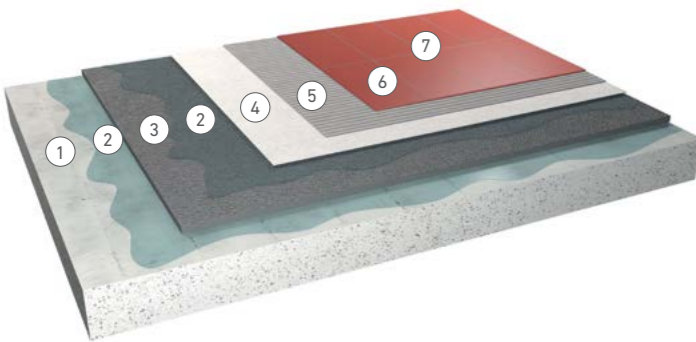
Waterproofing

ELOTEX® redispersible polymer powders and ELOTEX® specialty powder additives enhance the performance and reliability of one-component cementitious waterproofing membranes. Thanks to our broad product range, we offer advanced polymer technologies and solutions to prevent water intrusion, withstand hydrostatic pressure, improve adhesion and provide long service life.

Exposure to wet conditions, loads and thermal expansion/shrinkage can make waterproofing of buildings and other structural components challenging. Therefore, high quality polymer-based waterproofing membranes are essential for protection against water permeability and subsequent water-induced damage. We offer a wide range of RDP products for different waterproofing systems.

Rigid cement-based waterproofing membranes modified with our polymer binders are suitable for moisture-proof substrates with high compressive and flexural strength, and high resistance to water penetration, providing long-term durability.

Moreover, our very flexible ELOTEX® RDP is equally ideal for formulating one-component flexible cement-based waterproofing membranes containing higher polymer loading (>20%), especially those used on difficult-to-adhere substrates that are also susceptible to movement. Our polymer binders provide an excellent barrier against water, limit diffusion and protect against migration of chemicals such as mineral salts.



1 concrete substrate, 2 primer, 3 floor screed, 4 waterproofing membrane, 5 tile adhesive, 6 tile grout, 7 ceramic tiles

●●● = excellent ●● = very good ● = good
 ●●●● = highly recommended ●●● = recommended ●● = suitable

Redispersible polymer powders		Rigid waterproofing membranes			Flexible waterproofing membranes
Products		ELOTEX® HD1500	ELOTEX® FX7000	ELOTEX® TITAN8100	ELOTEX® FX2630
Characteristics	Chemical base	VA/VV	S/A	A	VA/E
	MFFT (°C), approx.	0	0	0	0
	Type	Semi-flexible	Semi-flexible	Hard	Very flexible
	Stabilization	PVOH	PVOH	Acrylic copolymer	PVOH
	Eco-friendly *EMICODE®	EC1	EC1	EC1	EC1 ^{PLUS}
Performance	Water impermeability	●●	●●●	●●●	●●●
	Adhesion	●●	●●●	●●●	●●●
	Defoaming	●●●	●●	●●	-
	Crack-bridging +23 °C	-	-	-	●●●
	Crack-bridging -5 °C	-	-	-	●●●
Applications	Rigid 1K cementitious membranes	●●●	●●●	●●●	-
	Flexible 1K cementitious membranes	-	-	-	●●●
Benefits		Good defoaming, excellent water pressure impermeability, and adhesion.	Good defoaming, excellent water pressure impermeability, and superior adhesion to various substrates.	Good water pressure impermeability, and surface hydrophobicity combined with good adhesion.	Excellent workability, improved flexibility and crack-bridging properties combined with great adhesion, and water pressure impermeability.

Specialty powder additives for 1K rigid waterproofing membranes

Products		ELOTEX® SEAL81	ELOTEX® SEAL200
Characteristics	Chemical base	Silane	Silane
	Functionality	Hydrophobicity	Hydrophobicity
Performance	Hydrophobicity	●●	●●●
Applications	Rigid 1K cementitious membranes	●●●	●●●
Benefits		Excellent water repellency and pearl effect, long term durability combined with very good wetting and mixing properties.	Superior water repellency and long term durability combined with very good wetting and mixing properties.



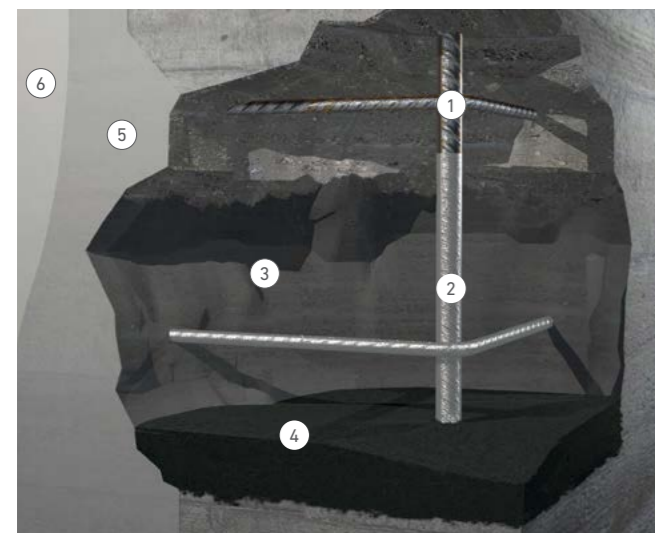
Concrete repair

ELOTEX® redispersible polymer powders, ELOTEX® specialty powder additives and Celvolit® emulsion polymers offer solutions to achieve superior physical performance and meet a broad range of challenging standard requirements of concrete repair mortars. They enable the improvement of many performance characteristics, such as improved adhesion and cohesion, reduced cracking and long-term protection against intrusion of moisture and pollutants.

The successful repair and subsequent protection of damaged concrete structures require the careful selection of polymer-modified cement-based mortars. The proper choice of polymer binders depends on several considerations, including the quality of substrate, expected loads and performance requirement specified for the repair.

The addition of Celanese RDP products to repair mortar ensure quick and easy handling, extend the service life of the repair and allow end-users to closely restore original structures.

ELOTEX® FX7000 and ELOTEX® TITAN8100 are two specially designed acrylic-based polymer powders with outstanding adhesion even to difficult-to-adhere surfaces such as an embedded reinforcing steel bar. Thanks to their great chemical resistance, these products are the smart choice for protection against weathering and cracking caused by volume changes for extended periods of time.



1 steel bar, 2 anti-corrosion slurry, 3 bonding primer, 4 repair mortar, 5 smoothing mortar, 6 concrete protection coat

Celvolit® emulsion polymers can be formulated into bonding primers to prime and seal old or damaged concrete surface, increase their wettability, and improve receptivity of these surfaces to good bonding for repair mortars.

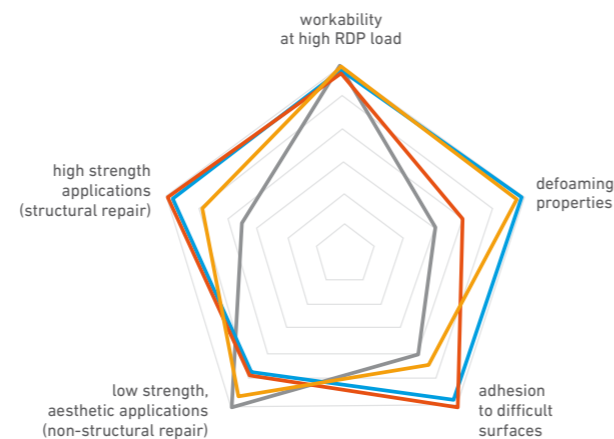
Benefits

- Improved workability and early strength
- Excellent bonding to the concrete substrates
- Optimized flexural and tensile strength
- Reduced shrinkage and cracking
- Protection against moisture absorption, CO₂ penetration and pollution

Typical applications

- Repair work on damaged or deteriorated concrete structures (non-structural and structural concrete repair)
- For levelling and repair work on floors
- Horizontal and vertical surfaces

ELOTEX® RDP for concrete repair



■ ELOTEX® MP2701 ■ ELOTEX® FL1210 ■ ELOTEX® FX7000 ■ ELOTEX® TITAN8100

Redispersible polymer powders

●●● = excellent ●● = very good ● = good
 ●●●● = highly recommended ●●● = recommended ● = suitable

Products		ELOTEX® MP2701	ELOTEX® FL1210	ELOTEX® FX7000	ELOTEX® TITAN8100
Characteristics	Chemical base	VA/E	VA/VV	S/A	A
	MFFT (°C), approx.	3	5	0	0
	Type	Flexible	Semi-flexible	Semi-flexible	Hard
	Stabilization	PVOH	PVOH	PVOH	Acrylic copolymer
	Eco-friendly *EMICODE®	EC1 ^{PLUS}	EC1 ^{PLUS}	EC1	EC1
Performance	Hydrophobicity	—	●●	●●	●●
	Defoaming	—	●●	●●	●●
	Adhesion to difficult surfaces	●●	●●	●●●	●●●
Applications	Non-structural repair	●●●	●●	●	●
	Structural repair	●	●●	●●●	●●●
Benefits		Excellent workability for formulations with high RDP content combined with good adhesion and flexibility.	Good defoaming, improved workability, and very good adhesion. Suitable for other applications.	Excellent adhesion to various substrates, good defoaming and high saponification resistance.	Fast redispersibility, particularly suited for applications which require short mixing time. Excellent adhesion to various substrates, including carbon mesh combined with high-saponification resistance.

Specialty powder additives

Products		ELOTEX® SEAL81	ELOTEX® SEAL200	ELOTEX® ERA100
Characteristics	Chemical base	Silane	Silane	Modified natural rosin
	Functionality	Hydrophobic	Hydrophobic	Anti-efflorescence
Performance	Hydrophobicity	●●	●●●	—
	Anti-efflorescence	●	●●	●●●
Applications	Non-structural repair	●●●	●●	●●●
	Structural repair	●●	●●●	●
Benefits		Excellent water repellency, long term durability combined with very good wetting and mixing properties.	Superior water repellency and long term durability combined with very good wetting and mixing properties.	Efficient against primary efflorescence, very good wetting and mixing properties.

Emulsion polymers

Products		Celvolit® 3220	Celvolit® 4215
Characteristics	Chemical base	VA/E	VA/E
	MFFT (°C), approx.	0	3
	Tg (°C), approx.	0	18
	Solids content (%)	54.0–57.0	54.0–57.0
	pH value	3.8–5.2	3.8–5.2
	Brookfield viscosity (25 °C) (mPa-s)	1600–2900	1600–2900
	Stabilization	PVOH/Surfactant	PVOH/Surfactant
	Applications	Sealing primers for concrete	●●●
	Concrete bonding	●●●	●●●
Benefits		A go-to polymer used as concrete bonding agent for concrete repair and general concrete primer (e.g. SLU). Good compatibility with cement-based mortar.	Good adhesion properties to a variety of substrates. Suitable for general concrete primers.



Exterior insulation & finish systems (EIFS)

ELOTEX® redispersible polymer powders, ELOTEX® specialty powder additives and Celvolit® emulsion polymers are essential for creating high quality and long-lasting exterior insulation and finish system (EIFS). This is achieved by strengthening the bonding between various prefabricated components and to improving the overall performance of the resulting system. With the help of our polymer technologies, formulated adhesives can achieve excellent bonding strength between different construction layers, along with improved flexibility and impact resistance. As a result, sturdy and enduring building facades with high degree of structural integrity can be obtained.

EIFS are used to substantially raise the energy efficiency of many buildings and have been credited for reducing heating and cooling costs by as much as 50% or more for many decades. To obtain the required thermal insulation performance and weather-resistance, it is essential to use premium polymer technologies and solutions to construct high quality EIFS.

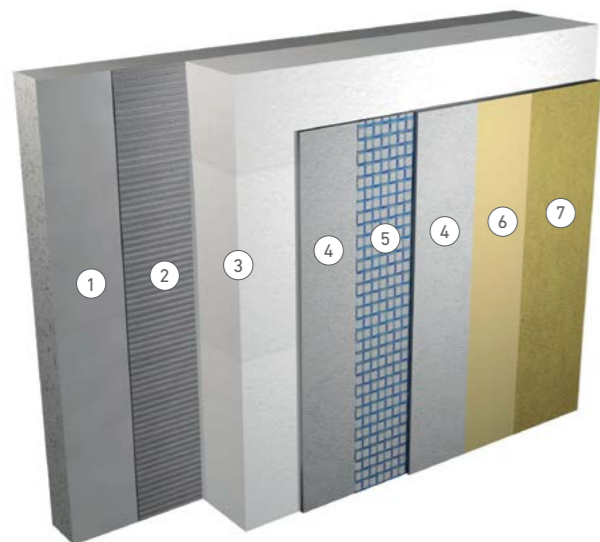
Celanese provides many polymer binders and additive solutions to formulate multiple layers within EIFS, including adhesives, embedding mortars, primers as well as decorative finishing coats, including exterior paints. When a high degree of water resistance is needed, ELOTEX® HD2040 would be our first choice due to its ability to increase hydrophobicity of many formulas. On the other hand, if there is a need for liquid primer, our Celvolit® 3220 is a popular VAE emulsion for a broad range of primers.

Benefits

- Enhanced adhesion between insulation boards to wall and mortar, especially boards made of expanded or extruded polystyrene (EPS and XPS)
- Improved flexibility, increased impact and crack resistance
- Reduced water absorption for base coats formulated with ELOTEX® HD2040
- Very good durability
- Low VOC values - *EMICODE® EC1^{PLUS} suitability

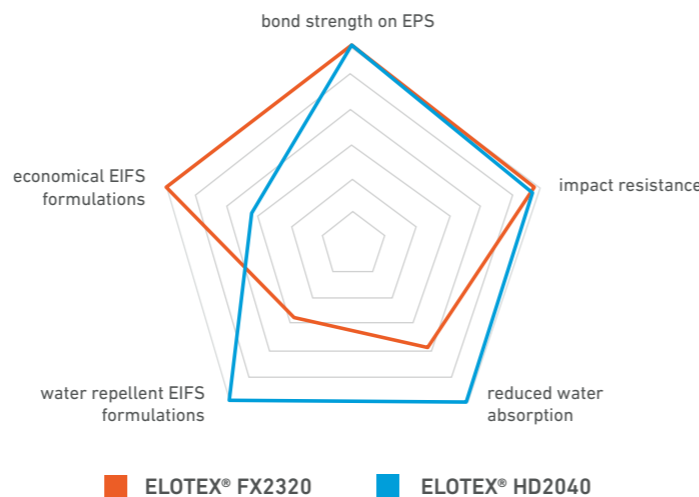
Typical applications

- Adhesive mortars
- Embedding mortars (base coats)
- Primers with Celvolit® emulsion polymers
- Renders (topcoats)



1 concrete substrate, 2 adhesive mortar, 3 insulation board, 4 base coat (embedding mortar), 5 reinforcement mesh, 6 primer, 7 topcoat

ELOTEX® RDP for EIFS



●●● = excellent ●● = very good ● = good
 ●●●● = highly recommended ●●● = recommended ● = suitable

Redispersible polymer powders

Products		ELOTEX® FX2320	ELOTEX® HD2040
Characteristics	Chemical base	VA/E	VA/E
	MFFT (°C), approx.	0	0
	Type	Flexible	Flexible
	Stabilization	PVOH	PVOH
	Eco-friendly *EMICODE®	EC1 ^{PLUS}	EC1 ^{PLUS}
Performance	Hydrophobicity	-	●●
	Adhesion after dry storage (23 °C)	●●●	●●●
	Adhesion after water immersion	●●	●●●
Applications	Adhesive mortars	●●●	●●
	Embedding mortars	●●●	●●●
Benefits		Excellent workability, adhesion and very good impact resistance on polystyrene substrates. Suitable for other applications.	Specially designed for hydrophobic EIFS mortars featuring high water repellent effect and reduced water absorption combined with good adhesion and impact resistance on insulation boards (e.g. polystyrene substrates).

Specialty powder additives

Products		ELOTEX® PAD3
Characteristics	Functionality	Polystyrene adhesion promoter
Performance	Flexibility	●
	Adhesion to polystyrene	●●●
	Impact resistance	●
Applications	Adhesive mortars with EPS	●●●
	Embedding mortars	-
Benefits		Outstanding adhesion to polystyrene substrates (EPS, grey EPS, XPS) after dry and wet storage, highly effective at low dosage and easy to handle.

Emulsion polymers

Products		Celvolit® 3220	Celvolit® 4215
Characteristics	Chemical base	VA/E	VA/E
	MFFT (°C), approx.	0	3
	T _g (°C), approx.	0	18
	Solids content (%)	54.0-57.0	54.0-57.0
	pH value	3.8-5.2	3.8-5.2
	Brookfield viscosity (25 °C) (mPa·s)	1600-2900	1600-2900
	Stabilization	PVOH/Surfactant	PVOH/Surfactant
Applications	Sealing primers	●●●	●●●
	2K adhesives and basecoats	●●●	●●●
	1K finish coats and renders	●	●
Benefits		A go-to VAE typically used as a primer. Provides very good adhesion when used in 2K cementitious adhesives to EPS or basecoats for EIFS.	A medium hard VAE typically used as a primer and general purpose construction adhesives. Also suitable for 2K cementitious adhesives to EPS and basecoats for EIFS.



Cement & lime-based renders

ELOTEX® redispersible polymer powders, in combination with ELOTEX® specialty powder additives and Celvolit® emulsion polymers, are ideal choices for boosting the performance and durability of cement and lime-based renders. Many performance upgrades can be obtained, including improved adhesion and flexibility, increased stability of finished surfaces, as well as elevated waterproofing capabilities of interior and exterior walls.

Building elements are covered with rendering mortars for mechanical and weathering protection as well as decoration. Celanese provides many polymer and additive solutions to satisfy a wide variety of project requirements.

For example, in addition to improving bond strength on various substrates, ELOTEX® HD2040 can also enhance hydrophobicity, providing excellent water resistance. On the other hand, for everyday general-purpose formulations, ELOTEX® MP2701 would be an excellent choice for very good all-around performance characteristics.

Regarding our ELOTEX® specialty powder additives portfolio, ELOTEX® SEAL81 greatly enhanced hydrophobicity and water repellency. When a higher degree of efflorescence resistance is needed, our ELOTEX® ERA line of additives would be our first recommendation.

Celvolit® emulsion polymers can be formulated into bonding primers to prime and seal concrete surface, increase their wettability, and improve receptivity of these surfaces to good bonding to renders.

Benefits

- Enhanced adhesion to various substrates
- Increased cohesive strength
- Improved flexibility and crack resistance
- Reduced water absorption with ELOTEX® HD2040 or ELOTEX® SEAL81
- Increased efflorescence resistance with ELOTEX® ERA additive line
- Improved durability
- Low VOC values - *EMICODE® EC1^{PLUS} suitability

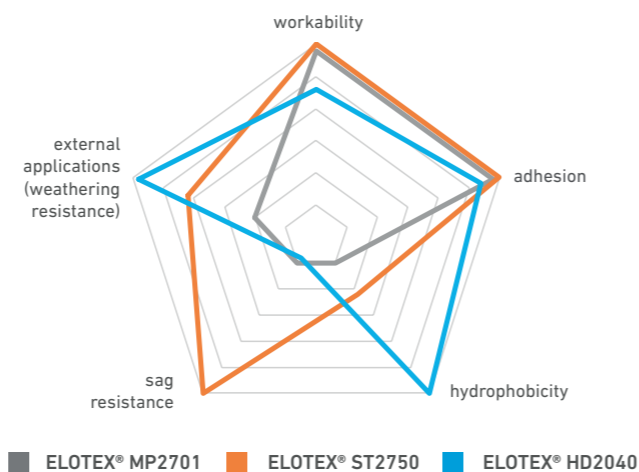
Typical applications

- Exterior and interior walls for a board range of substrates
- Base coat renders for surface leveling
- Textured and smooth finishing renders (e.g., stucco and skim coat)
- Insulating and fire-proofing renders

ELOTEX® RDP for cement-lime-based renders



ELOTEX® ERA100 for perfect surface appearance of pigmented renders



●●● = excellent ●● = very good ● = good
 ●●●● = highly recommended ●●● = recommended ● = suitable

Redispersible polymer powders

Products		ELOTEX® MP2701	ELOTEX® ST2750	ELOTEX® HD2040
Characteristics	Chemical base	VA/E	VA/E	VA/E
	MFFT (°C), approx.	3	3	0
	Type	Hard	Hard	Flexible
	Stabilization	PVOH	PVOH	PVOH
	Rheology	Neutral	Thixotropic	Neutral
	Eco-friendly *EMICODE®	EC1 ^{PLUS}	EC1 ^{PLUS}	EC1 ^{PLUS}
Performance	Adhesion	●●●	●●●	●●●
	Flexibility	●	●	●●●
	Sag resistance	-	●	-
	Hydrophobicity	-	-	●●●
Applications	Interior leveling renders	●●●	●●●	●●
	Interior finishing renders / skim coats	●●●	●●●	●●
	Exterior leveling renders	●●	●●	●●●●
	Exterior finishing renders / skim coats	●●	●●	●●●
Benefits		Very good workability and adhesion. Suitable for other applications.	Very good workability and anti-sag properties combined with good adhesion. Ideal for vertical and overhead applications.	Excellent water repellency, reduced water absorption coupled with good adhesion and flexibility.

Specialty powder additives

Products		ELOTEX® SEAL81	ELOTEX® ERA100	ELOTEX® ERA200
Characteristics	Chemical base	Silane	Modified natural rosin	Modified natural rosin
	Functionality	Hydrophobicity	Anti-efflorescence	Anti-efflorescence
Performance	Hydrophobicity	●●	-	●
	Anti-efflorescence	●	●●●	●●●
Applications	Interior leveling renders	●	●	●
	Interior finishing renders / skim coats	●	●	●
	Exterior leveling renders	●●	●●	●●
	Exterior finishing renders / skim coats	●●●	●●●	●●●
Benefits		Excellent water repellency, long term durability combined with very good wetting and mixing properties.	Efficient against primary efflorescence, very good wetting and mixing properties.	Efficient against primary and secondary efflorescence, reduced water permeability, very good wetting and mixing properties.

Emulsion polymers

Products		Celvolit® 3220	Celvolit® 4215
Characteristics	Chemical base	VA/E	VA/E
	MFFT (°C), approx.	0	3
	Tg (°C), approx.	0	18
	Solids content (%)	54.0-57.0	54.0-57.0
	pH value	3.8-5.2	3.8-5.2
	Brookfield viscosity (25 °C) (mPa-s)	1600-2900	1600-2900
	Stabilization	PVOH/Surfactant	PVOH/Surfactant
Applications	Primers	●●●	●●●
Benefits		A go-to VAE widely used as primer for various surfaces. Good compatibility with cement based mortar.	Good adhesion properties to a variety of substrates including wood and concrete. Can be used as primer on masonry surfaces.



Joint fillers & plasters

ELOTEX® redispersible polymer powders, in combination with ELOTEX® specialty powder additives, can be used to improve the quality and performance of powder joint fillers and plasters by boosting adhesion, workability, flexibility as well as improving water resistance. On the other hand, our Celvolit® emulsions are broadly used to formulate ready mixed joint compound for drywall taping.

Gypsum-based products are the preferred construction material for modern building due to their excellent thermal and sound insulation properties as well as their positive environmental impact. When formulated with ELOTEX® products, powder joint fillers and plasters exhibit high bonding strength on gypsum boards and paper wall joint tape, providing stable and flexible surfaces.

ELOTEX® AD0110 is an ideal polymer binder for interior gypsum based joint fillers and smoothing compounds. Compounds formulated with ELOTEX® AD0110 exhibit very good workability and adhesive properties, even when formulated to meet the most stringent VOC regulations.

ELOTEX® SEAL712 is our unique specialty powder additive designed to increase hydrophobicity. It increases the water repellency of gypsum-based products efficiently and is typically used in wet interior areas.

Celanese emulsions Celvolit® 1063 and Celvolit® 1214 have been our go-to liquid polymer binders for the industry to formulate ready-mix tape joint compounds for gypsum wallboards. They provide very good workability and sandability, excellent adhesion, as well as crack and shrinkage resistance.



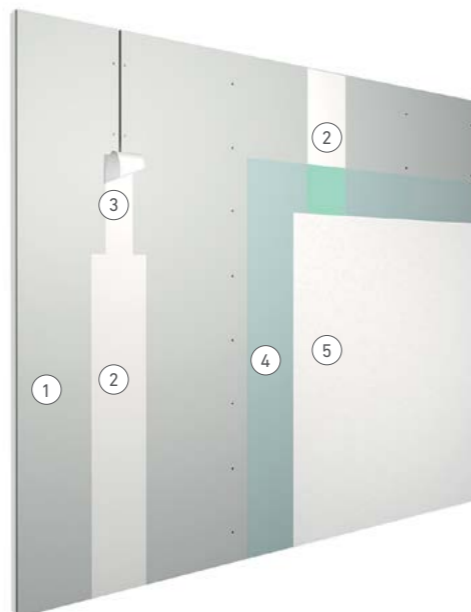
ELOTEX® SEAL712 for perfect water beading effect of gypsum based mortars

Benefits

- Increased adhesion and cohesion
- Enhanced flexibility and reduced crack formation
- Reduced water absorption and imparted water repellency of gypsum-based products with ELOTEX® SEAL712

Typical applications

- Tape joint compounds for interior gypsum walls and ceilings boards
- Interior gypsum applications for wet areas (ELOTEX® SEAL712)



1 plasterboard, 2 joint filler, 3 paper tape, 4 primer, 5 plaster (smoothing compound = skim coat)

●●● = excellent ●● = very good ● = good
●●●● = highly recommended ●●● = recommended ● = suitable

Redispersible polymer powders

Products		ELOTEX® MP2701	ELOTEX® AD0110
Characteristics	Chemical base	VA/E	PVAc
	MFFT (°C), approx.	3	5
	Type	Hard	Hard
	Stabilization	PVOH	PVOH
Performance	Eco-friendly *EMICODE®	EC1 ^{PLUS}	EC1 ^{PLUS}
	Adhesion to paper tape	●●	●●●
Applications	Adhesion and cohesion	●●	●●●
	Plasters (gypsum or limestone-based)	●●●	●
	Smoothing compounds (gypsum or limestone-based)	●●	●●●
Benefits	Joint compounds (gypsum or limestone-based)	●●	●●●
		Excellent workability and adhesion, especially in gypsum-based formulations. Suitable for other applications.	Very good workability and outstanding adhesion, especially after dry storage combined with very good abrasion resistance.

Specialty powder additives

Products		ELOTEX® SEAL712
Characteristics	Chemical base	Silane
	Functionality	Hydrophobicity
Performance	Hydrophobicity	●●●
	Thixotropicity	-
Applications	Plasters	●●●
	Smoothing compounds	●●●
	Joint compounds	●●●
Benefits		Designed for gypsum-based products only, excellent water repellent and beading effects, long term durability combined with very good wetting and mixing properties.

Emulsion polymers

Products		Celvolit® 1063	Celvolit® 1214
Characteristics	Chemical base	PVAc	VA/E
	MFFT (°C), approx.	8	5
	Tg (°C), approx.	20	11
	Solids content (%)	57.5–60.5	54.0–57.0
	pH value	4.3–5.7	4.8–5.2
	Brookfield viscosity (25 °C) (mPa·s)	800–2700	1600–2900
	Stabilization	Colloid	PVOH
Performance	Adhesion	●●●	●●●
	Sandability	●●●	●●●
	Shrinkage resistance	●●●	●●●
Applications	Ready mixed joint compounds	●●●	●●●
	Spackling compounds	●●●	●●●
Benefits		An externally plasticized, colloid stabilized PVAc emulsion commonly used for formulating tape-joint compounds. Excellent paper adhesion and sandability.	A go-to VAE co-polymer especially designed for tape-joint compounds, providing very good adhesion, enhanced flexibility and crack resistance.



Dust control & soil stabilization

Celvolit® emulsion polymers have been successfully used in field applications for both dust control and soil stabilization in many parts of the world. Functioning like an adhesive, the polymers bind the dust particles together and reduce their tendency to be mobilized by environmental factors such as wind. Similarly, this added adhesion among the soil particles greatly improves the overall strength of treated soil.

The particle binding properties of the polymers found in our emulsions prevent small dust particles from becoming airborne, which in turn mitigates dust-related environmental hazards, including reduction in visibility and air quality. Additionally, our emulsions can be used on dusty materials to reduce dust creation during their transportation, as well as the erosion of outdoor stockpiles due to weathering.

On the other hand, when our emulsion is used as an additive and incorporated with soil, the polymers also act as an 'adhesive' bridge between particles within the soil. Therefore, after proper processing including compaction, compressive strength of the treated soil is enhanced, resulting in added stabilization. This technique of using emulsion polymer for soil stabilization has been used for a variety of purposes, including road construction in rural areas.

Benefits

Dust control

- Improved durability, reduced frequency of re-application, cost savings over an extended period of time
- Less corrosive vs. commonly used mineral salts
- Enhanced binding to surfaces, reduced rate of removal by traffic and other environmental factors
- Increased water resistance

Soil stabilization

- Increased unconfined compressive strength
- Fast installation, emulsions are easy to dilute on site and spray-applied
- Energy saving, no heating is required
- Usage of native soil greatly reduces transportation of non-native road paving material to job sites
- Applicable in many remote areas where alternative methods are challenging to use

Typical applications

- Dust mitigation for unpaved dirt roads and the surroundings, mines, construction sites, etc.
- Reduction of airborne dust during transportation of dusty materials
- Erosion control for outdoor stockpiles
- Landscaping spray-on adhesive for mulch and small stones
- Road paving and base course stabilization



Dust control

●●● = excellent ●● = very good ● = good
 ●●●● = highly recommended ●●● = recommended ● = suitable

Emulsion polymers - Dust control

Products		Celvolit® VA20	Celvolit® 3068
Characteristics	Chemical base	Vinyl acrylic	VA/E
	MFFT (°C), approx.	10	0
	Tg (°C), approx.	20	10
	Solids content (%)	53.5–56.5	53.5–56.5
	pH value	3.8–6.2	3.8–5.7
	Brookfield viscosity (25 °C) (mPa·s)	50–500	50–550
	Stabilization	Surfactant	Surfactant
Performance	Ease of handling & on site dilution	●●●	●●●
	Service life expectancy	●●●	●●
	Water resistance	●●●	●●●
Applications	Dust control	●●●	●●●
	Soil stabilization	●●●	●●
	Erosion control	●●●	●●●
Benefits		A versatile vinyl acrylic emulsion for dust control; enhances durability and water resistance with improved service life and reduced need for re-application. Easy on-site dilution and application by conventional sprayers. Excellent durability compared to traditional dust mitigation methods.	A surfactant based VAE broadly used for dust control in many situations including transportation of dusty materials. Also suitable for erosion control for stockpiles. Low Tg and MFFT enhance its ability to be used in suboptimal film formation field conditions.

Emulsion polymers - Soil stabilization

Products		Celvolit® VA20	Celvolit® VA32	Celvolit® 3068
Characteristics	Chemical base	Vinyl acrylic	Vinyl acrylic	VA/E
	MFFT (°C), approx.	10	10	0
	Tg (°C), approx.	20	19	10
	Solids content (%)	53.5–56.5	53.5–56.5	53.5–56.5
	pH value	3.8–6.2	3.8–6.2	3.8–5.7
	Brookfield viscosity (25 °C) (mPa·s)	50–500	600–1650	50–550
	Stabilization	Surfactant	Surfactant	Surfactant
Performance	Ease of handling & on site dilution	●●●	●●	●●●
	Service life expectancy	●●●	●●●	●●
	Water resistance	●●●	●●●	●●●
Applications	Dust control	●●●	●●●	●●●
	Soil stabilization	●●●	●●●	●●
	Erosion control	●●●	●●●	●●●
Benefits		A very versatile and popular PVA for soil stabilization; improves compressive strength either applied topically or mixed with native soil, or optimally, both. Easy to dilute on site and applied by conventional sprayers. Equally effective when used as polymer binder for dust mitigation.	A surfactant based PVA for soil stabilization; improves compressive strength of native soil. Easy to be applied by conventional sprayers. Very effective when used as polymer binder for dust control.	A surfactant-based VAE emulsion for soil stabilization. Low Tg and MFFT enhance its ability to be used in sub-optimal film formation field conditions. Low as-supplied viscosity allows for easy handling and on-site dilution.

Product Overview

Products		Characteristics					Recommended Applications													Products		
Redispersible polymer powders	Polymer base	Type	MFFT approx. (°C)	Additional features	Eco-friendly *EMICODE® EC1 PLUS suitability	Flooring			Tile adhesives	Tile grouts	Waterproofing membranes		Concrete repair		EIFS	Renders	Joint fillers		Dust Control	Soil Stabilization	Redispersible polymer powders	
						SLU/screeds cement & lime-based	primer	adhesive (e.g. carpet)	cement-based		rigid	flexible	non-structural	structural		cement-lime-based	gypsum-based	limestone-based				
ELOTEX®	AD0110	PVAc	Hard	5	Outstanding dry and paper adhesion																ELOTEX®	AD0110
ELOTEX®	FL1210	VA/VV	Semi-flexible	5	Good defoaming, good adhesion and flexural strength																ELOTEX®	FL1210
ELOTEX®	FL1900	VA/VV	Hard	3	Excellent defoaming, leveling, superior peel strength and surfaces		•														ELOTEX®	FL1900
ELOTEX®	FL2280	VA/E	Hard	3	Good defoaming, leveling, adhesion, smooth, even surfaces		•														ELOTEX®	FL2280
ELOTEX®	FL3210	VA/E/VV	Hard	5	Excellent defoaming, leveling, adhesion and improved surfaces		•														ELOTEX®	FL3210
ELOTEX®	FX2311	VA/E	Semi-flexible	5	Excellent workability and adhesion to plywood					•											ELOTEX®	FX2311
ELOTEX®	FX2320	VA/E	Flexible	0	Excellent workability, adhesion and impact resistance									•							ELOTEX®	FX2320
ELOTEX®	FX2630	VA/E	Very flexible	0	Excellent workability, adhesion and crack-bridging							•									ELOTEX®	FX2630
ELOTEX®	FX5600	VA/E/VV/A	Semi-flexible	0	Excellent workability and adhesion after wet storage					•											ELOTEX®	FX5600
ELOTEX®	FX7000	S/A	Semi-flexible	0	Excellent adhesion on difficult substrates, very fast redispersibility						•										ELOTEX®	FX7000
ELOTEX®	HD1500	VA/VV	Semi-flexible	0	Good defoaming, improved water resistance and adhesion					•	•										ELOTEX®	HD1500
ELOTEX®	HD2040	VA/E	Flexible	0	Good workability, water repellency, adhesion and good impact resistance					•				•	•						ELOTEX®	HD2040
ELOTEX®	MP2701	VA/E	Hard	3	Excellent workability and adhesion, multipurpose, good impact resistance					•	•		•	•	•	•	•				ELOTEX®	MP2701
ELOTEX®	ST2750	VA/E	Hard	3	Slight anti-slip properties, good workability and adhesion					•				•							ELOTEX®	ST2750
ELOTEX®	TITAN8100	A	Hard	0	Excellent adhesion on difficult substrates, very fast redispersibility						•			•							ELOTEX®	TITAN8100

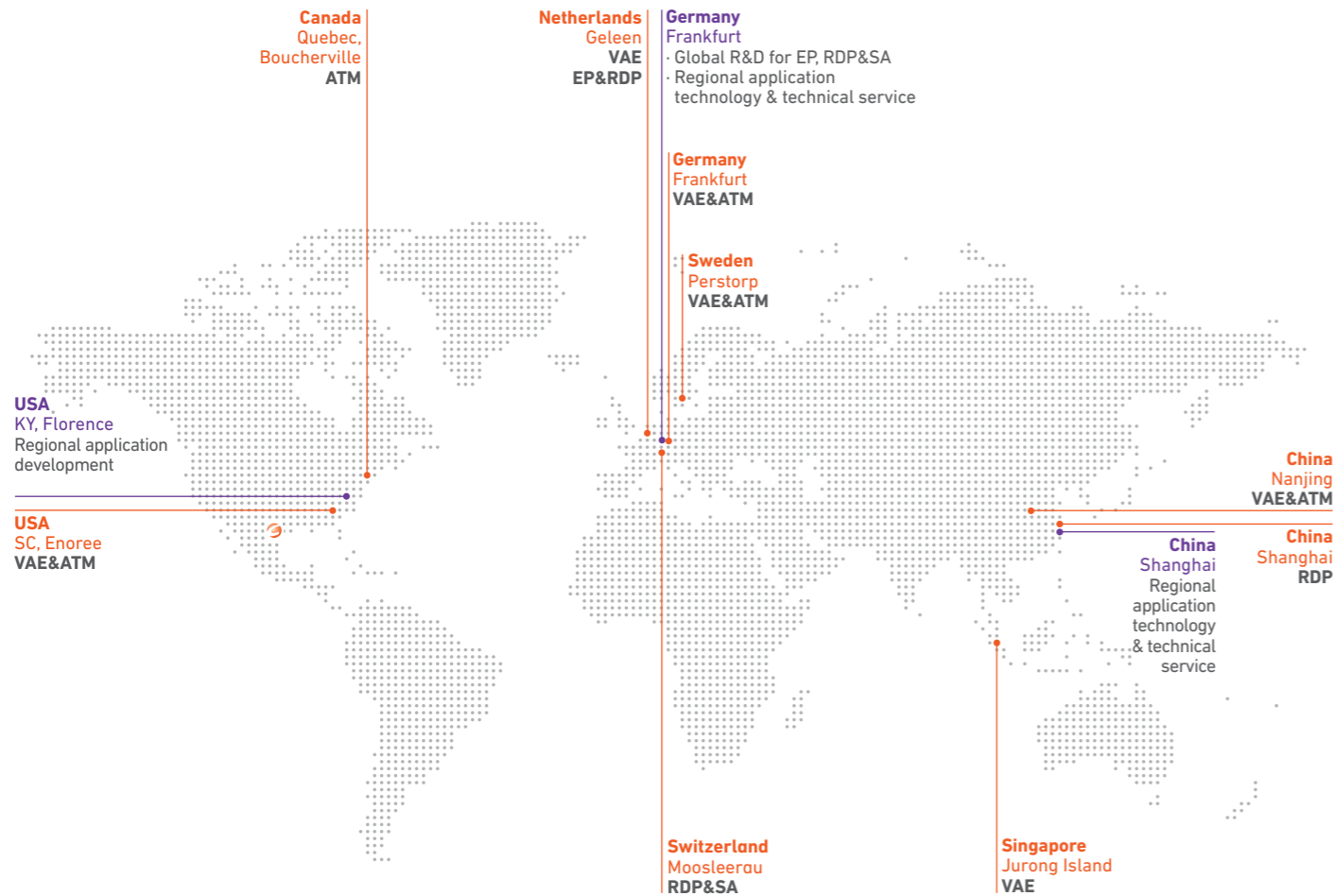
Specialty powder additives	Chemical base	Functionality																			Specialty powder additives	
ELOTEX®	CAST710	Formulated compound	Rheology																		ELOTEX®	CAST710
ELOTEX®	ERA100	Modified natural rosin	Anti-efflorescence							•					•						ELOTEX®	ERA100
ELOTEX®	ERA200	Modified natural rosin	Anti-efflorescence							•					•						ELOTEX®	ERA200
ELOTEX®	FLOWKIT53	VA/E copolymer	Rheology and adhesion																		ELOTEX®	FLOWKIT53
ELOTEX®	OTA100	Formulated compound	Open time extension							•					•						ELOTEX®	OTA100
ELOTEX®	OTA200	Formulated compound	Open time extension							•											ELOTEX®	OTA200
ELOTEX®	PAD3	Formulated compound	Polystyrene adhesion promoter											•							ELOTEX®	PAD3
ELOTEX®	SEAL200	Silane	Hydrophobicity							•	•		•	•							ELOTEX®	SEAL200
ELOTEX®	SEAL712	Silane	Hydrophobicity														•				ELOTEX®	SEAL712
ELOTEX®	SEAL81	Silane	Hydrophobicity							•	•		•	•		•					ELOTEX®	SEAL81

Emulsion polymers	Polymer base	MFFT approx. (°C)	Tg approx. (°C)	Stabilization	Solids content (%)	Brookfield viscosity (25 °C, mPa·s)	pH														Emulsion polymers	
Celvolit®	1063	PVAc	8	20	Colloid	57.5–60.5	800–2700	4.3–5.7													Celvolit®	1063
Celvolit®	1214	VA/E	5	11	PVOH	54.0–57.0	1600–2900	4.8–5.2													Celvolit®	1214
Celvolit®	3025	PVAc	16	40	PVOH/Surfactant	54.5–57.5	1700–2900	4.3–5.7		•	•										Celvolit®	3025
Celvolit®	3068	VA/E	0	10	Surfactant	53.5–56.5	50–550	3.8–5.7											•	•	Celvolit®	3068
Celvolit®	3220	VA/E	0	0	PVOH/Surfactant	54.0–57.0	1600–2900	3.8–5.2		•	•		•	•							Celvolit®	3220
Celvolit®	4215	VA/E	3	18	PVOH/Surfactant	54.0–57.0	1600–2900	3.8–5.2		•	•		•	•							Celvolit®	4215
Celvolit®	VA20	Vinyl acrylic	10	20	Surfactant	53.5–56.5	50–500	3.8–6.2											•	•	Celvolit®	VA20
Celvolit®	VA32	Vinyl acrylic	10	19	Surfactant	53.5–56.5	600–1650	3.8–6.2											•	•	Celvolit®	VA32

Global reach

The global research and development center for ELOTEX® products and for Celanese emulsion polymers is located in Frankfurt, Germany. The centers closely cooperate with the other Celanese regional application development centers in Florence, Kentucky, USA and in Shanghai, China.

These regional facilities enable us to rapidly develop new products and assist customers in the region with their development projects. We have manufacturing plants and technical support in all major regions.



Celanese Headquarter, Dallas, Texas, USA
 Technology sites
 Production sites

ATM = Conventional (atmospheric)
 VAE = High-pressure, vinyl acetate/ethylene
 EP = Emulsion polymers
 RDP = Redispersible polymer powders
 SA = Specialty powder additives

Product testing and technical service

Understanding customer and industry needs

The Celanese technical team worldwide consistently strives to meet the needs of our customers, including their formulated construction products. Our application development team has many decades of experience and expertise in formulation development, testing and assessment of mortar systems. We are constantly updating our laboratory with modern equipment to aid us in designing and adapting our products to meet real-world application profiles and enable product testing according to the latest standards and norms.

Always a step ahead in innovation

As a market leader, Celanese is continuously investing in development and improvement of new products and processes. We would be happy to share our latest advances with you and provide you with the right tools to support your new developments.



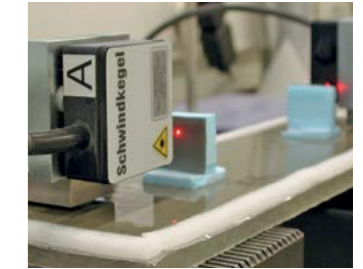
Tensile adhesion strength EN 12004
Tile adhesives



Transverse deformation EN 12004
Tile adhesives



Crack-bridging ability EN 14891
Flexible waterproofing membranes



Thin Layer Shrinkage System with laser sensors
Self-leveling flooring compounds

Abbreviations

A = Acrylate
 E = Ethylene
 MFFT = Minimum film forming temperature
 PVA = Polyvinyl acrylic
 PVAc = Vinyl acetate homopolyme
 PVOH = Polyvinyl alcohol
 SLU = Self leveling underlayment
 Tg = Glass transition temperature
 VA = Vinyl acetate
 VA/E = Vinyl acetate ethylene copolymer
 VOC = Volatile organic compound
 VV = Vinyl versatate

* Only full members of the GEV may label their products with EMICODE® seal after fulfilling certain conditions and testing. EMICODE® EC2, EC1 and EC1^{PLUS} are registered trademarks of GEV. Note that the VOC emissions of the final dry mortar are impacted by formulation ingredients other than only redispersible polymer powders.



**REDISPERSIBLE POLYMER POWDERS
SPECIALTY POWDER ADDITIVES
EMULSION POLYMERS**
celanese.com

Contact information

Europe, Middle East & Africa

**Redispersible Polymer Powders,
Specialty Powder Additives
& Emulsion Polymers**

Celanese Switzerland AG
Neumattstrasse 196
5054 Moosleerau
Switzerland
tel. +41 62 738 88 88

Emulsion Polymers

Celanese Emulsions GmbH
Industriepark Höchst,
Brüningstr. 50, Geb. C 657
D-65926 Frankfurt am Main
Germany
tel. + 49 69 45009 2162

info.acetyls.emea@celanese.com

Americas

**Redispersible Polymer Powders,
Specialty Powder Additives
& Emulsion Polymers**

Celanese International
8040 Dixie Highway
Florence, KY 41042
USA

Celanese International Corporation
222 W Las Colinas Blvd.
Irving, TX 77039
USA

tel. + 1 877 832 7782 (Technical Service)
tel. + 1 800 845 0940 (Customer Service)

info.acetyls.americas@celanese.com

Asia Pacific

**Redispersible Polymer Powders
Specialty Powder Additives
& Emulsion Polymers**

Celanese (China) Holding Co., Ltd.
4560 Jinke Road, Zhangjiang, Pudong
Shanghai, China
tel. +86 21 38619288

Celanese Pte. Ltd.
70 Anson Road, #21-01/02
Hub Synergy Point
Singapore 079905

Celanese Chemicals India Pvt. Ltd
701, C & B Square Building, Sangam
Complex, 127 Andheri Kurla Road
Chakala, Andheri East
Mumbai - 400 059, India
tel. +91 22 6259 6200

info.acetyls.aoc@celanese.com

Copyright ©2026 Celanese or its affiliates. All rights reserved.

Celanese® R, registered C-ball design and all other trademarks identified herein with the R, TM, SM, unless otherwise noted, are trademarks of Celanese or its affiliates. This publication was printed based on Celanese's present state of knowledge, and Celanese undertakes no obligation to update it. Because conditions of product use are outside Celanese's control, Celanese makes no warranties, express or implied, and assumes no liability in connection with any use of this information. Nothing herein is intended as a license to operate under or a recommendation to infringe any patents.

EMUL-006-Building&Construction NAM-Bro-EN-0326